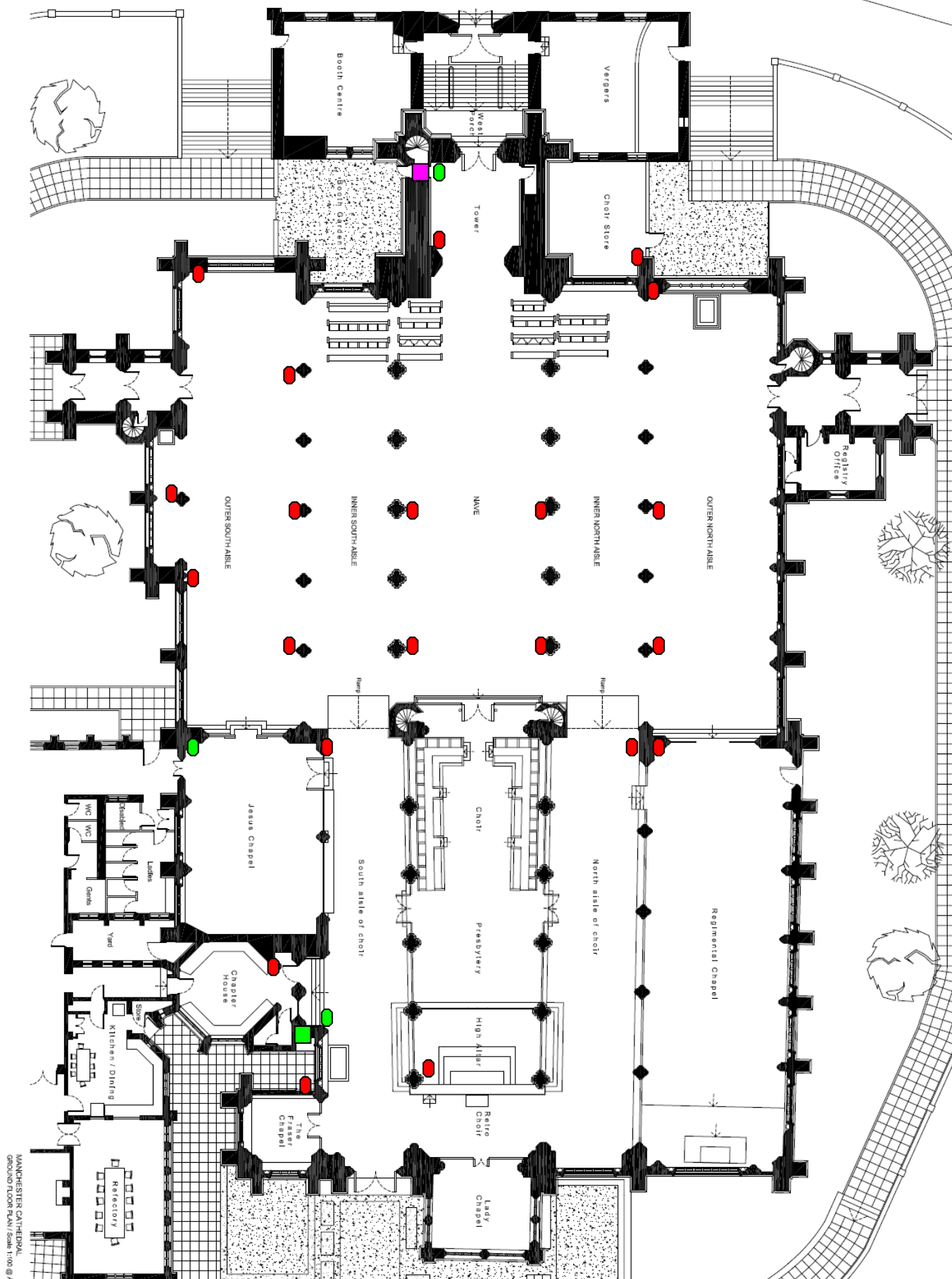


# Manchester Cathedral Power and Socket Positions



MANCHESTER CATHEDRAL  
GROUND FLOOR PLAN / Scale 1:100 @ 7/

- 32 Amps Single Phase from West end mains position
- 63 Amp Three Phase from East end mains position
- 13 Amp socket outlet
- 32 Amp single phase socket outlet